



Jotun Protects Property

# *Jotafloor*

TRAFFIC DECK SYSTEM



Superior Floor Protection

# JOTUN WORLDWIDE

Jotun is a global leader in paints and coatings. With 74 companies and 39 production facilities on all continents. In addition, Jotun has agents, branch offices and distributors in more than 80 countries.

Renowned for quality, Jotun is a leading manufacturer and supplier of high performance coatings. The protection of concrete projects is an area of particular expertise for Jotun. By combining investment, proven technology and innovative solutions, Jotun has earned a wealth of practical knowledge in the successful protection of structures located throughout the world.

Extensive research and development has positioned Jotun as a leader in providing economic, innovative, high performance solutions.

## Jotafloor Traffic Deck System

As one of the dynamic Jotafloor range of products, the Traffic Deck System is a high performance, versatile coating system designed to specifically protect concrete floor/traffic decks normally found in car parks that are subjected to heavy vehicular traffic.

A combination of systems can be produced using the various products within the range to ensure that the final protection offered is tailor made for the end use of the floor. Ramps, turning circles and parking bays require the extra protection these systems offer. In addition the final PU Topcoat can be produced in a wide range of attractive colours.

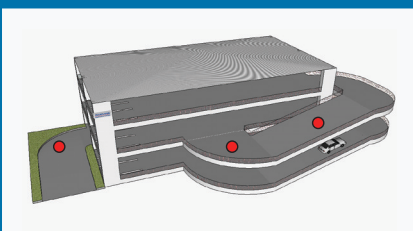
This full system represents the latest in reinforced glass flake epoxy and polyurethane technology.

## Recommended Use

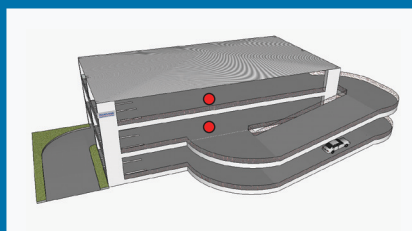
The Jotafloor Traffic Deck System offers the ultimate protection to concrete floors subject to the long term stress produced by the constant wear of vehicular traffic onto a coating system.

Typical areas of use include:

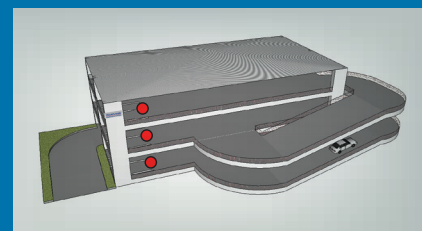
### Ramps and Turning circles



### Driveways



### Parking bays



## Chemical resistance

Chemicals play a vital role in flooring deterioration. Parking areas are exposed to exhaust fumes and oil spills from vehicles. It is important to evaluate the impact of these chemicals. Temperatures, concentration and duration of contact affects the coating. The Jotafloor range provides a variety of chemical resistant systems.



## Reduced Risk

Jotafloor offers a range of coating systems along with technical services to ensure superior quality to all stakeholders thereby reducing the level of risk involved.

## Water and moisture resistance

It is important to protect the concrete from liquids, pollutants, spillage and deterioration. Water and moisture can affect the performance of the coating if left for prolonged periods. The Jotafloor range has the ability to prevent such deterioration.



## Optimum sun proofing

Open air and roof top parking are very much exposed to harsh sunlight and humidity. These elements combined with acids and salts can destroy the coating applied in the parking areas.

The Jotafloor range is a strong combination of scientifically engineered coatings to withstand such elements.



## Heavy traffic defence

Jotafloor is designed to resist the stress caused by heavy traffic. Areas like the driveways, ramps and turning circles are prone to stress and abrasion caused by vehicular traffic.

Jotafloor products are designed to withstand deterioration from heavy vehicular usage.



## Colours designed to last

Colours are not simply aesthetics, they are visual cues for directions, protection from chemicals and vehicular abrasion over a long period of time.

The Jotafloor range offers a variety of colours for both interior and UV resistant exterior use.



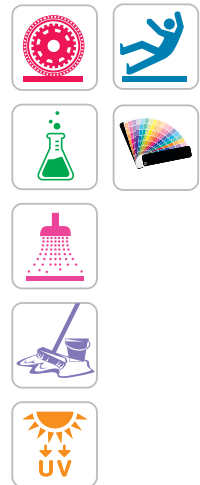
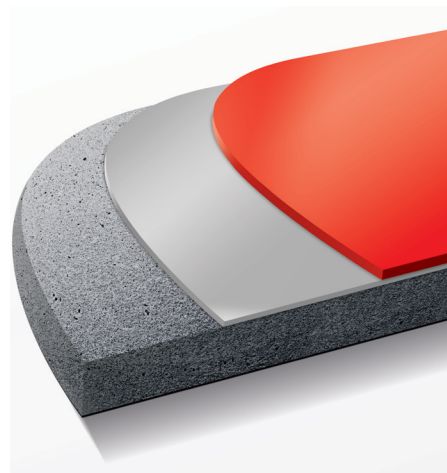


## Hygiene

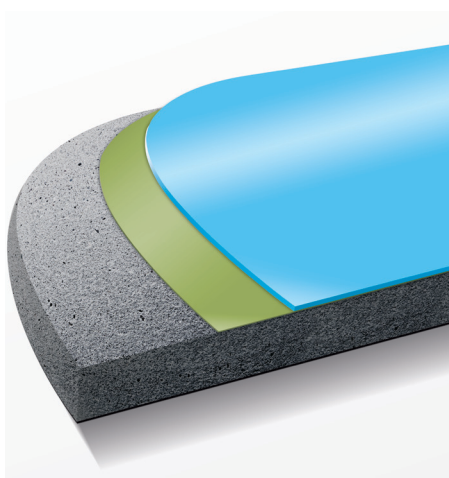
Hygiene is an important requirement in parking places. Over time food and liquid spillage combined with humidity can build up molds and unpleasant odor caused by microbial formation and chemical reactions.

The Jotafloor range is designed to resist the build up of microbes and molds.

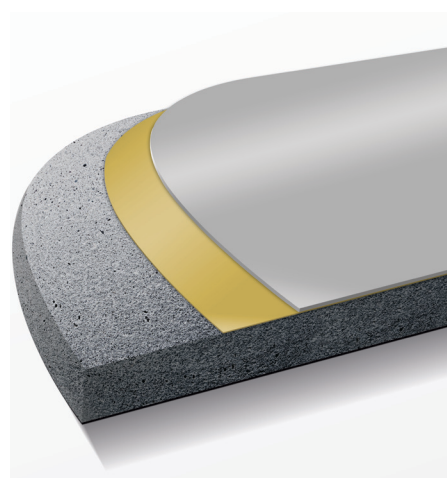
## System Recommendation - Pedestrian Walkways



- 1 x Jotafloor Solvent Free Primer 100 Mic DFT
- Jotafloor Non-slip Aggregate (Fine or Medium)
- 2 x Jotafloor PU Topcoat 70 Mic DFT Each

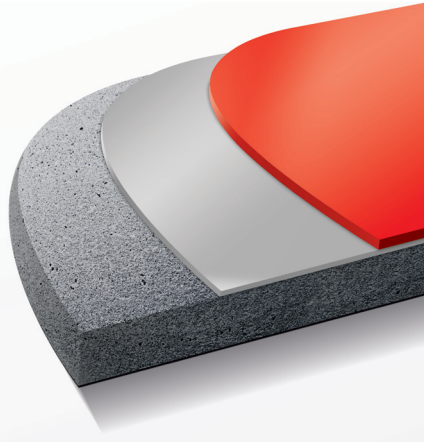
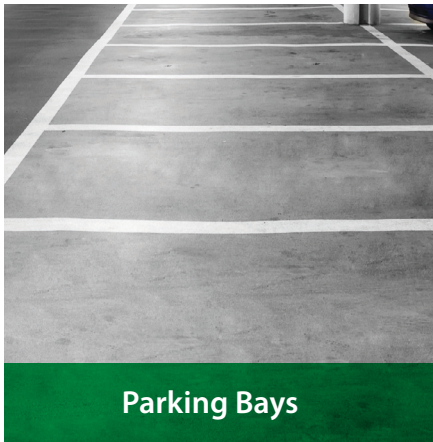


- 1 x Jotafloor Sealer WB 20 Mic DFT
- 2 to 3 x Jotafloor Rapid Dry WB 35 Mic DFT Each



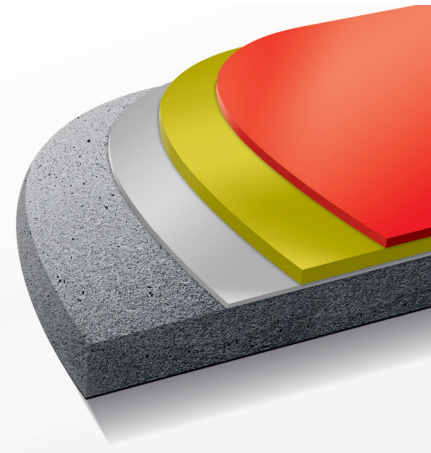
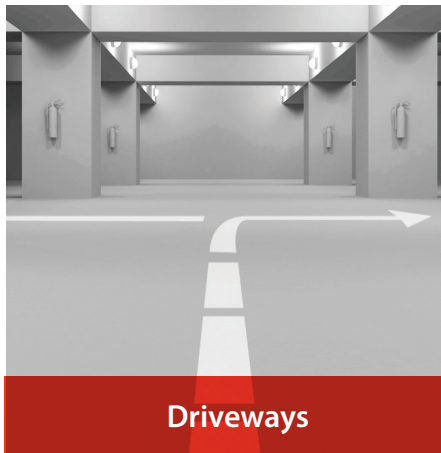
- 1 x Jotafloor Sealer 40 Mic DFT
- 2 x Jotafloor Topcoat 50 Mic DFT Each (No UV exposure)

# System recommendation - Traffic Deck System



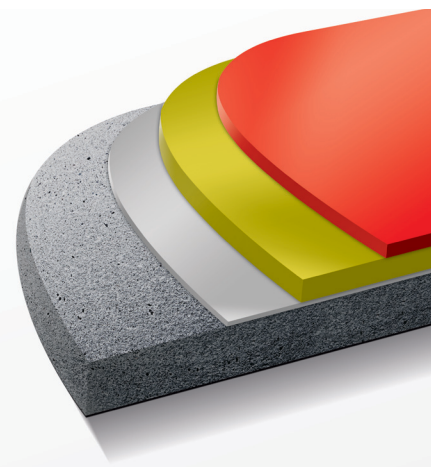
## Light Traffic Deck System (Parking Bays)

- 1 x Jotafloor Solvent Free Primer 100 Mic DFT
- 2 x Jotafloor PU Topcoat 70 Mic DFT Each



## Medium Traffic Deck System (Driveways)

- 1 x Jotafloor Solvent Free Primer 100 Mic DFT
- 1 x Jotafloor Glassflake 300 Mic DFT
- Jotafloor Non-slip Aggregate (Fine or Medium)
- 2 x Jotafloor PU Topcoat 70 Mic DFT Each



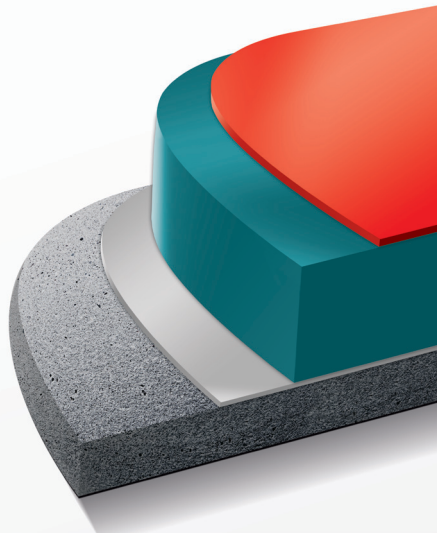
## Heavy Traffic Deck System (Ramps)

- 1 x Jotafloor Solvent Free Primer 100 Mic DFT
- 1 x Jotafloor Glassflake 400 Mic DFT
- Jotafloor Non-slip Aggregate (Fine or Medium)
- 3 x Jotafloor PU Topcoat 70 Mic DFT Each





ASTM C 957 Membrane

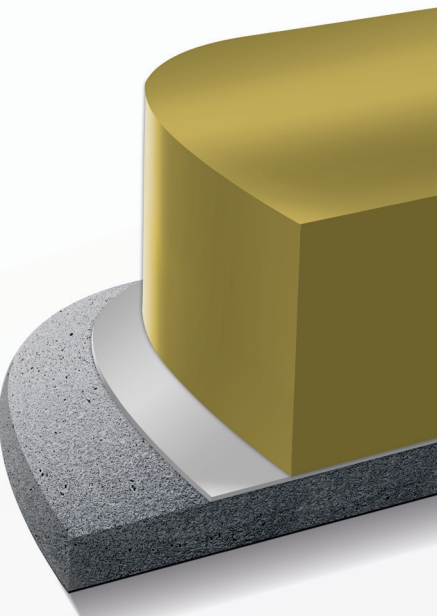


### Traffic Deck System Membrane (ASTM C 957)

- 1 x Jotafloor Solvent Free Primer 100 Mic DFT
- 1 x Jotafloor PU Universal 1300 DFT
- Jotafloor Non-slip Aggregate (Fine or Medium) (Contact local Jotun office for application)
- 2 x Jotafloor PU Topcoat 70 Mic DFT Each



Bus & Trucks

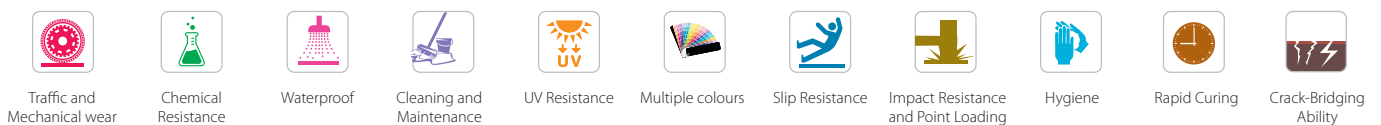


### Traffic Deck System Bus and Trucks

- 1 x Jotafloor Solvent Free Primer 100 Mic DFT
- 1 x Jota Armour 3 mm



Legend:



## WHERE YOU CAN FIND US

---

**Jotun A/S**, P.O. Box 2021, N-3202 Sandeford, Norway  
Tel: +47 33 45 70 00, [www.jotun.com](http://www.jotun.com)



Jotun Protects Property